

# Gestetner

*Versatile Digital Imaging Systems*



D I G I T A L I M A G I N G S Y S T E M S

# 1502/1802/1802d



*The 1502 with Platen Cover.*



*The 1802d with Duplex, 50-Sheet ARDF, PS450 Paper Bank and Console.*

## Big office performance that won't break the bank

IF YOU'RE LOOKING FOR A DOCUMENT MANAGEMENT SYSTEM THAT'S POWERFUL AND AFFORDABLE, THERE'S GOOD NEWS! THE GESTETNER 1502, 1802 AND 1802*d* DELIVER ADVANCED DIGITAL TECHNOLOGY, EXCEPTIONAL IMAGE QUALITY AND OPTIONAL NETWORK CONNECTIVITY.



*The 100-Sheet Bypass lets you load special papers and envelopes.*

### **YOUR DESK... YOUR WORKGROUP... YOUR CHOICE**

Whether you're looking for desktop convenience or a more robust system that can accommodate the needs of a small workgroup, the Gestetner 1502/1802/1802*d* easily meet the requirements of either environment.

- Gestetner 1502 – 15 PPM with a maximum paper capacity of 1,350 sheets and optional 30-sheet Automatic Document Feeder.
- Gestetner 1802 – 18 PPM with a maximum paper capacity of 1,600 sheets and optional 30-sheet Automatic Document Feeder.
- Gestetner 1802*d* – 18 PPM with standard Duplexing, optional 50-sheet Automatic Reversing Document Feeder and a maximum paper capacity of 1,600 sheets.

Choose the standard digital copier and add print and fax options as you need them, or

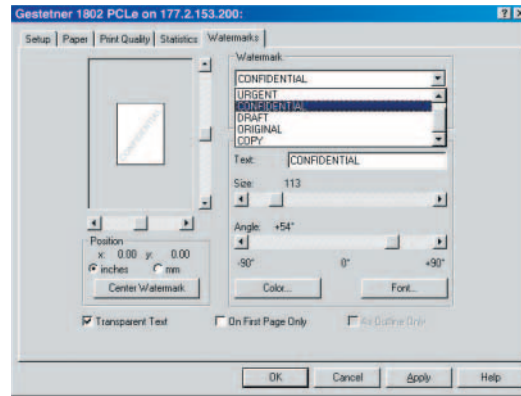
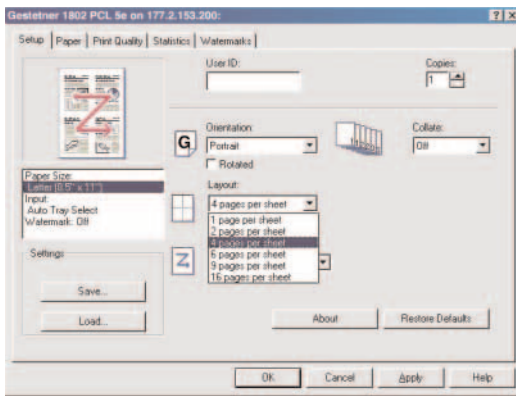
begin with a fully configured system. And, regardless of how you configure your 1502/1802/1802*d*, you're assured of a solution that will...

- Reduce capital equipment costs.
- Reduce consumable inventory.
- Save valuable office space.

### **PRODUCTIVE PRINTING**

Add the optional Print Controller and Ethernet Interface and your 1502/1802/1802*d* becomes a 15 PPM (1502) or 18 PPM (1802/1802*d*) network printer.

- Reduce network traffic and speed-up job turnaround times with Send Once, RIP Once – available through optional RAM – and with a high performance processor.
- Enjoy support for PC and Macintosh printing with standard PCL and optional PostScript 2 emulation.
- Seamlessly integrate with today's most popular network platforms.



User-friendly drivers help you easily navigate through your set-up and output choices.

### VERSATILE FAXING

With the Gestetner 1502/1802/1802d fax option, you'll gain advanced fax functionality with capabilities that exceed many high-end – and expensive – standalone fax systems.

- Reduce your phone bills with the 1502/1802/1802d's super-fast three second transmission capability.
- Access a variety of sophisticated features, such as Dual Access and Batch Transmission, and dramatically boost fax productivity.

### SAY GOODBYE TO ANALOG

A suite of powerful digital capabilities minimizes the time you spend in the document production process, allowing more time for more important tasks.

- Scan originals once and the 1502/1802/1802d automatically produces the number of requested copies. Add the optional Automatic Document Feeder and you won't have to manually feed originals.
- If you've loaded paper that doesn't match the orientation of hardcopy originals, print

jobs or fax receptions – no problem. The 1502/1802/1802d will automatically rotate the image for correct output.

- There's no need to add a sorter because the 1502/1802/1802d will automatically produce sorted sets from memory. And, you can even have your sets rotated at alternating 90° angles, which makes retrieving them a snap (1502 requires an optional paper source).

### DEFINITELY NOT HIGH-MAINTENANCE

The Gestetner 1502/1802/1802d are "no-nonsense" when it comes to handling day-to-day document management tasks.

- Non-stop copy, print and fax output is guaranteed thanks to the 1502/1802/1802d's exceptionally large and versatile paper supplies. Plus, you'll spend less time switching paper, making it easy to process jobs with special media requirements such as envelopes.
- A dual component consumable design minimizes routine maintenance, improves image quality and reduces cost-per-page.

### AUTOMATIC DUPLEXING (1802d ONLY)

Choose the 1802d and gain productive – and cost effective – duplexing capabilities.

- Do something good for the environment and save money by cutting paper usage in half.
- Eliminate the need for excessive – and expensive – hardcopy filing space.
- Reduce postage costs.
- Automatically fax two-sided originals – without the need to create single-sided copies (requires Fax Option and Automatic Reversing Document Feeder).
- Output duplexed originals from the desktop with a single click of your mouse (requires Print Option).

### MANAGES ITSELF

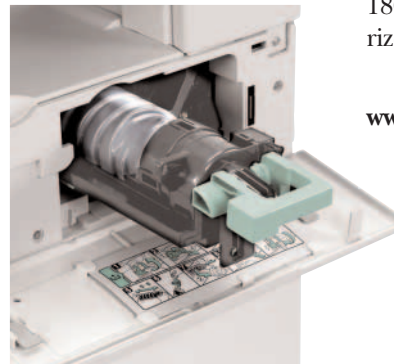
The Gestetner 1502/1802/1802d comes with everything you need to increase your productivity, even its own manager. SmartNetMonitor is a comprehensive management utility that enables easy network installation, offers powerful print management capabilities for users and administrators and provides real-time information – including system configuration, system status, and paper supplies.

### MAKE YOUR MOVE

There's no time like the present to find out how digital office technology can transform your small office or workgroup into a powerhouse of efficiency.

For more information about the Gestetner 1502/1802/1802d, contact your authorized Gestetner sales location.

[www.gestetnerusa.com](http://www.gestetnerusa.com)



The Dual Component design makes toner replacement a snap.

# 1502/1802/1802d

## DIGITAL IMAGING SYSTEMS



### Copier & General Specifications

Configuration	Digital copier
Copying Process	Dry electrostatic transfer
Recording Method	Laser
Toner	Dual Component
Copier Memory	16 MB expandable to 48 MB
Resolution	600 dpi
Gray Scale	64 levels
Continuous Copy Speed	18 cpm - letter size (1802, 1802d) 15 cpm - letter size (1502)
Multiple Copy	Up to 99
Warm-Up Time	20 seconds
First Copy Time	6.9 seconds
Original Size	Up to 11" x 17"
Output Document Size	5.5" x 8.5" - 11" x 17"
Standard Paper Supply	2 x 250 sheet drawers, 100 sheet bypass (1802, 1802d) 1 x 250 sheet drawer, 100 sheet bypass (1502)
Maximum Paper Capacity	1,600 sheets (1802, 1802d) 1,350 sheets (1502)
Paper Output Capacity	250 sheets internal tray
Paper Weight	Drawers 16 - 24 lb. Bypass 14 - 42 lb. Duplex 20 - 24 lb. (1802d)
Zoom Range	50% - 200% in 1% increments
Reduction Ratios	93%, 78%, 65%, 50%
Enlargement Ratios	121%, 129%, 155%
Dimensions	23.1"W x 22.4"D x 20.4"H (1802d) 21.7"W x 22.4"D x 20.4"H (1802) 21.7"W x 22.4"D x 16.5"H (1502)
Power Source	120V/60Hz 15A
Weight	99 lbs. (1802d) 93 lbs. (1802) 77 lbs. (1502)
Other Features	Auto Image Density, Auto Off, Auto Start, Auto Reduce/Enlarge, Image Rotation, Photo Mode, Series Copying, Electronic Sort, Combine Originals 2/4, User Codes (50), Scan Once/Print Many, Auto Tray Switch*, Rotate Sort*, Duplexing (1802d)

\*1502 requires optional Paper Bank

### Printer Module Option

Print Speed	18 ppm (1802, 1802d), 15 ppm (1502)
CPU	75 MHz
Memory Capacity	16 MB standard, expandable to 144 MB
Printer Languages	PCL6/5e (standard) PS2 emulation (option)
Interface	Parallel IEEE1284, NIB (option)
Driver	Windows 95/98/NT 4.0/2000/Me/XP Macintosh 8.x/9.x
Fonts	35 Intellifonts, 10 TrueType, 80 PostScript (option)
Resolution	600 dpi
Topologies	Ethernet (10/100BaseT)
Network Protocols	TCP/IP, IPX/SPX, AppleTalk (Auto Switching)
Network Operating Systems	Novell NetWare 3.x, 4.x, 5.x and Systems Intranetware; Microsoft Windows 95/98/ NT 4.0/2000/Me/XP; Mac OS 8.x/9.x
Other Features	Collation, Slip Sheet, Edge Smoothing, Watermarks, Envelope Printing, Tray Locking

### Fax Module Option

Compatibility	Group 3, ITU.T
Modem Speed	33.6 Kbps with automatic shutdown
Transmission Speed	3 seconds
Scanning Speed	1.2 seconds (200 x 200 dpi)
Compression Method	MH, MR, MMR
Resolution	200 x 400 dpi
Standard Page Memory	4 MB (160 pages*)
Transmission/Reception	Up to 11" x 17"
Auto Dial	32 quick, 100 speed, 9 groups
Other Features	Auto Reduction, Send Later, Direct Fax Number Entry, Label Insertion, Restricted Access, Telephone Directory, Dual Access, Batch Transmission, Forwarding, One Hour Memory Backup

\*Based on ITU-T No. 1 chart

### Other Options

- DF71 Auto Reversing Document Feeder - 50 Sheets (1802d)
- DF72 Auto Document Feeder - 30 Sheets (1502/1802)
- Consoles
- Copier Memory 32 MB
- Network Interface Board Type 1018
- 32 MB, 64 MB, 128 MB DIMM Printer Memory
- PS460 Paper Bank (500 x 1)
- PS450 Paper Bank (500 x 2)
- PostScript 2 Emulation Type 1018
- Platen Cover Type 1018
- Handset Type 1018

# Gestetner

Gestetner Stamford, Connecticut 06904  
Product specifications subject to change without notice.  
All other trademarks are the property of their respective owners.  
Printed in U.S.A. (G1608) 35M 11/01

